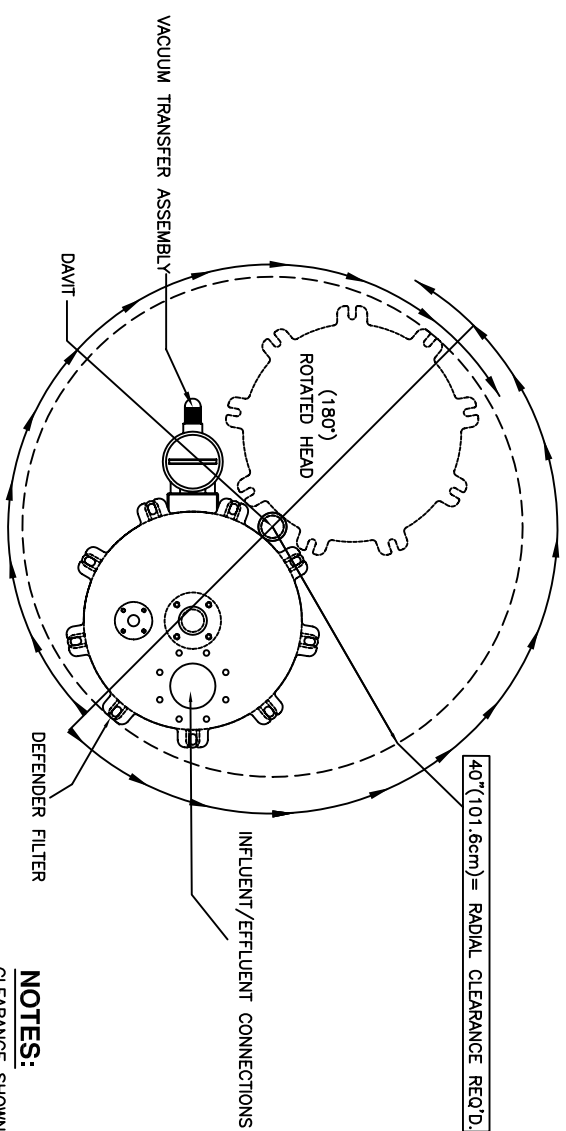
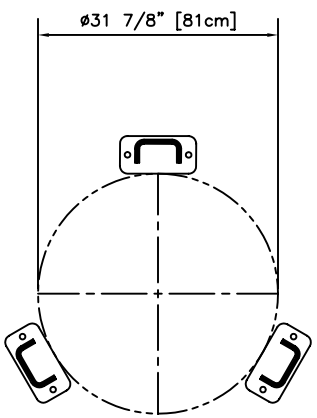


UPPER HEAD AND ELEMENT DETAIL

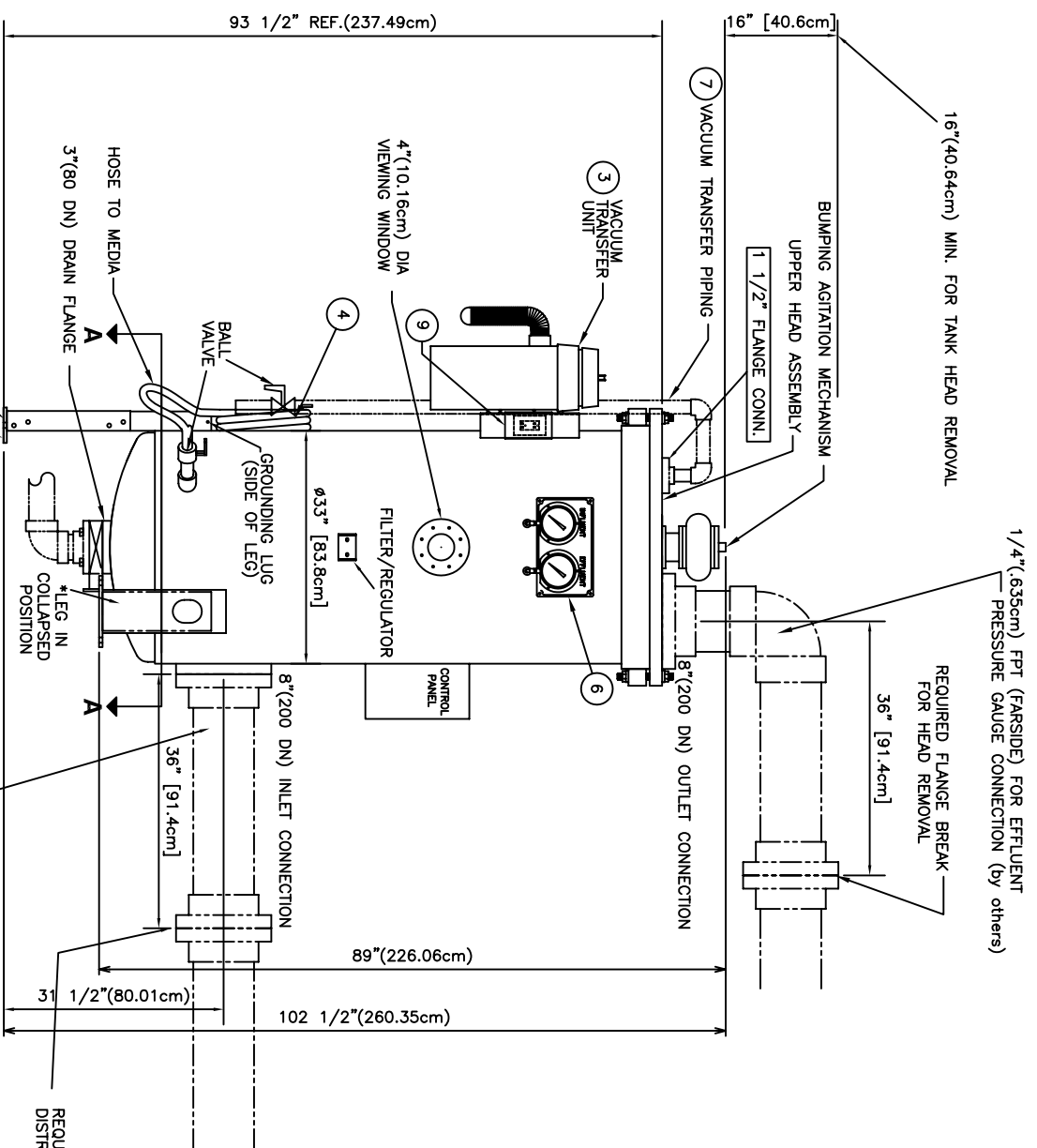


HEAD REMOVAL CLEARANCE REQUIREMENT

NOTES:
CLEARANCE SHOWN FOR CLOCKWISE AND COUNTER CLOCKWISE ROTATION

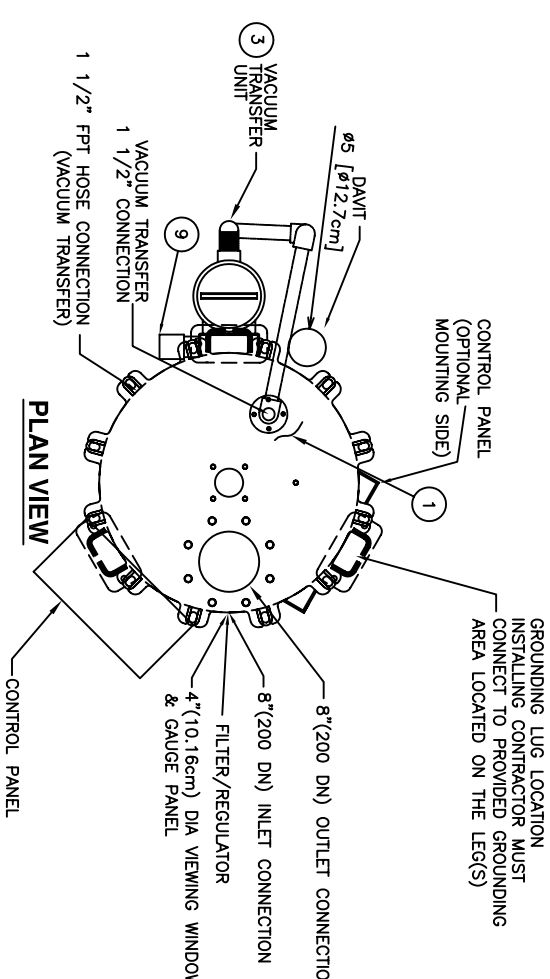
BILL OF MATERIAL			
MARK NO.	DESCRIPTION	PART #	REMARKS
1	DEFENDER FILTER #SP-33-48-732	SP-33-48-732	
2	AUTOMATIC FILTER PROGRAMMER	MICROBUT7	SNP LOOSE
3	120V VACUUM TRANSFER ASSEMBLY	12870	SNP LOOSE
4	MEDIA SUCTION ASSEMBLY	11141	SNP LOOSE
5	VACUUM HOSE, & BRACKET	11918	NOT SHOWN
6	1/2" (1.27cm) NPT CONNECTION	11918	SNP LOOSE
7	VACUUM TRANSFER PLUMBING KIT	12882	SNP LOOSE
8	DEFENDER DRAIN VALVE 3" W/EXTEN.	12817	SNP LOOSE
9	120V REMOTE RECEPTACLE	12876	SNP LOOSE

MATERIAL SHIPPED LOOSE



FRONT ELEVATION

DEFENDER FILTER, MODEL #SP-33-48-732, REQUIRED AS SHOWN

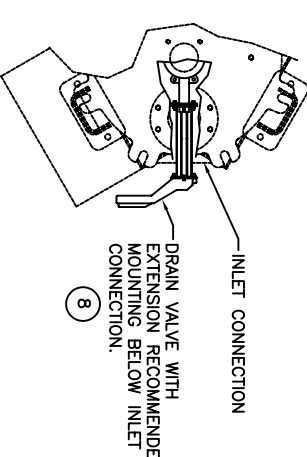


PLAN VIEW

- NOTES:**
1. FILTER TANK IS TO BE CONSTRUCTED OF HIGH QUALITY A36 CARBON STEEL. INTERIOR OF TANK IS LINED WITH FLEXSOL 3000. EXTERIOR IS COATED WITH 5-8 MILS OF HIGH SOLIDS ENAMEL. NO WELDING OR EXTREME HEAT IS TO BE APPLIED TO TANK AFTER LINING OR COATING PROCESS IS DONE.
 2. ELECTRICAL REQUIREMENTS: 120VAC-Ø-60HZ, 20 AMP CIRCUIT PROTECTION
 3. LOCATE ALL ELECTRICAL ITEMS IN A NON-HAZARDOUS LOCATION.
 4. ELECTRICAL CONNECTIONS ARE THE RESPONSIBILITY OF THE CUSTOMER.
 5. MEDIA QUANTITIES ARE INDICATED FOR INFORMATIONAL PURPOSES ONLY.
 6. ALL PNEUMATIC TUBING BY POOL CONTRACTOR.
 7. DRAIN VALVE MUST BE A BUTTERFLY VALVE AND INSTALLED DIRECTLY ON THE BOTTOM TANK HEAD.

REQUIRED FLANGE BREAK FOR INFLUENT DISTRIBUTION SYSTEM INSPECTION/CLEANING

*TANKS ARE SHIPPED WITH LEGS IN THE COLLAPSED POSITION TO REDUCE OVERALL HEIGHT AND ASSIST TANK ACCESS. TANK MUST BE INSTALLED WITH LEGS IN EXTENDED POSITION.



DRAIN VALVE ORIENTATION PLAN VIEW - SECTION A:A

NOTE: SEE PLAN VIEW FOR TRUE ORIENTATION OF ALL FITTINGS

FILTER DATA	
FLOW RATE =	G.P.M. (m ³ /hr)
FILTRATION RATE =	GPM/SQ.FT (m ³ /hr/m ²)
FILTER AREA =	572 SQ.FT. (53.14m ²)
NUMBER OF TUBES =	732
UNIT WEIGHT: 1,800 LBS. (817kg) (DRY)	
UNIT CAPACITY: 250 GALS. (.946m ³)	
OPERATING WEIGHT: 3,880 LBS. (1760kg)	
3 LEGS PER TANK	
CONCRETE BEARING PRESSURE	26 PSI (1.8kg/cm ²)
MEDIA REQUIREMENTS	
PERLITE	45 LBS. (20.41kg) (5.4 cu.ft.)



THE COMPANY, INCLUDING ALL RIGHTS AND INTERESTS RESERVED HEREIN, IS NOT TO BE REPRODUCED OR TRANSMITTED IN ANY FORM OR BY ANY MEANS, ELECTRONIC OR MECHANICAL, INCLUDING PHOTOCOPYING, RECORDING, OR BY ANY INFORMATION STORAGE AND RETRIEVAL SYSTEM, WITHOUT PERMISSION IN WRITING BY NEPTUNE-BENSONT, INC.

PROJECT	Website Sample		
CUSTOMER	-		
MODEL:	SP-33-48-732		
DRAWN	TWO	DRAWING NO.	REV.
DATE	5/20/2011	FP-1	JOB NO.
CHECKED			
NO.	DATE	BY	DESCRIPTION
1			
2			
3			
4			
5			
6			
7			
8			
9			